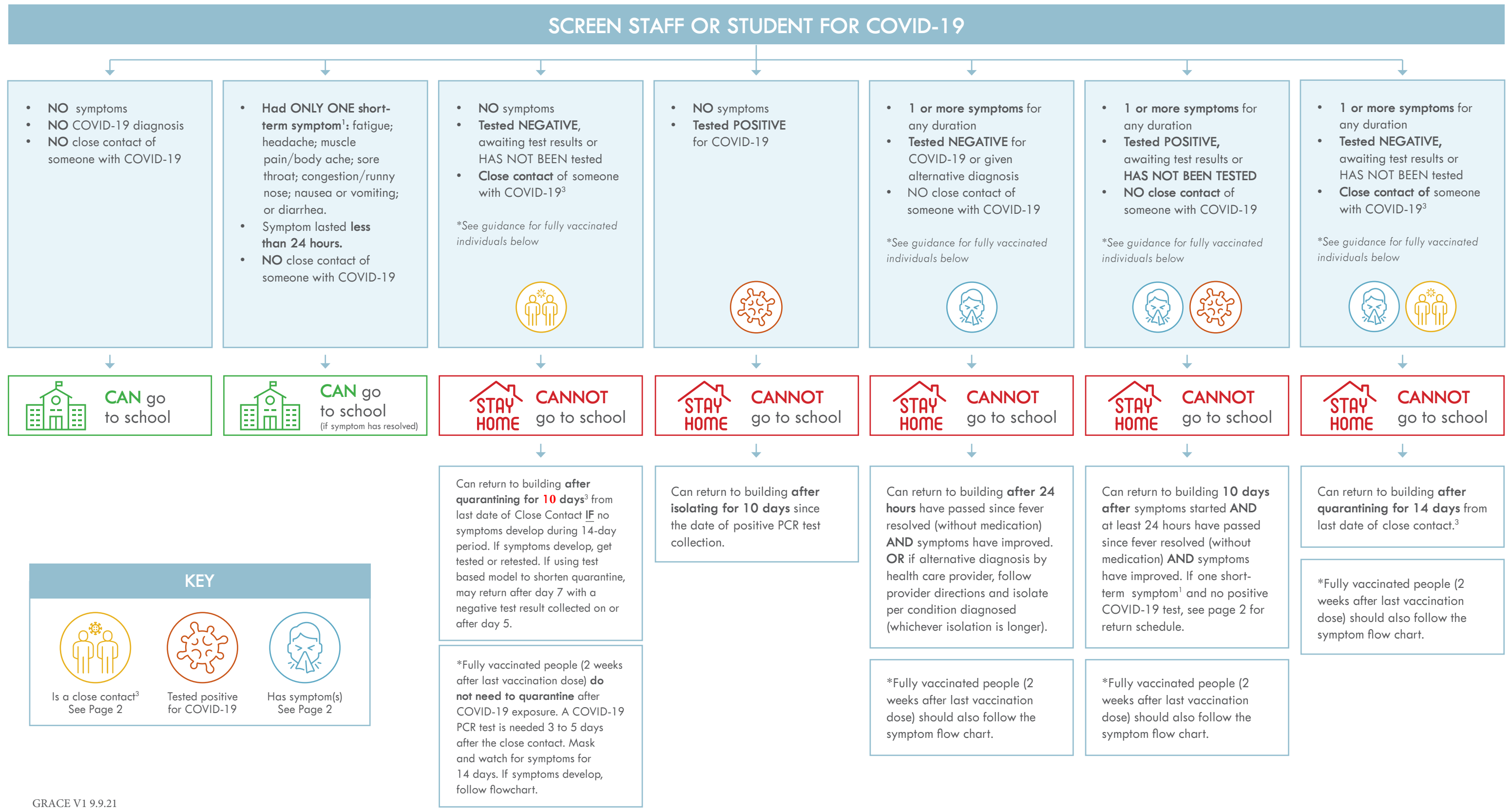


# COVID-19 Return to School and Work Flow Chart



# COVID-19 Return to School and Work Flow Chart



## COVID-19 SYMPTOMS<sup>2</sup>

- Fever (100.4°F / 38°C or higher)
- Cough
- Loss of taste or smell
- Chills
- Shortness of breath or difficulty breathing
- Fatigue
- Headache
- Muscle pain or body aches
- Sore throat
- Congestion or runny nose
- Nausea or vomiting
- Diarrhea

New symptoms, not explained by a preexisting condition, such as asthma or allergies.

<sup>1</sup>A **short-term symptom** is defined as: A person has **only one of the following symptoms** (fatigue; headache; muscle pain or body aches; sore throat; congestion or runny nose; nausea or vomiting; or diarrhea) **AND** the symptom begins and resolves in less than 24 hours **AND** no known COVID-19 exposure (close contact).

A person can return to school the next day if the short-term symptom resolves. A COVID-19 test is not required.



## CLOSE CONTACT DEFINITION<sup>3</sup>

“Close Contact” includes anyone in one or more of the following categories:

- Been within 3 feet (1 meter) of a person with COVID-19 for a combined total of 15 minutes or more within a 24-hour period
- Live in the same household as a person with COVID-19
- Cared for a person with COVID-19
- Been in direct contact with saliva or other body secretions from a person with COVID-19

Public Health will help identify close contacts.

**If you've been exposed to someone with COVID-19 and you have no symptoms, Public Health recommends the following:**

### STUDENTS K-12

- If a student has been exposed and is fully vaccinated, the exposed student does not need quarantine as long as they remain symptom free. A COVID-19 PCR test is needed 3 to 5 days after the close contact. Mask and watch for symptoms for 14 days. If symptoms develop, get tested.
- If a student has been exposed and is NOT fully vaccinated and both individuals were masked properly, the exposed student does not need quarantine as long as they remain symptom free. A COVID-19 PCR test is needed 3 to 5 days after the close contact. Mask and watch for symptoms for 14 days. If symptoms develop, get tested.
- If a student has been exposed and is NOT fully vaccinated and one or both individuals were NOT masked properly, the exposed student quarantines for 14 days after the last contact. COVID-19 PCR test is needed 3 to 5 days after the close contact; a negative test result does NOT release the individual from quarantine. Mask and watch for symptoms for 14 days. If symptoms develop, get tested.

### STAFF/TEACHERS

Not Vaccinated:

1. Stay in quarantine for 14 days after your last contact. **This is the safest option.**
2. If this is not possible, stay in quarantine for 10 days after your last contact, without additional testing.
3. If the first two options are not possible, stay in quarantine for 7 full days beginning after your last contact **and** if you receive a negative test result (get tested no sooner than day 5 after your last contact). This option depends on availability of testing resources and may not be recommended in some settings.

Fully Vaccinated:

- Fully vaccinated people (2 weeks after last vaccination dose) with no symptoms **do not need to quarantine** after COVID-19 exposure. Watch for symptoms for 14 days. If symptoms develop, follow flowchart.